

Customer :

customer

Customer part :

customer part

Comment :

Comment

S1=4.78

S2=4.79

Tmax=456

Tp S2=495.0

PI=0.5

HI=94

Sample =1742.80

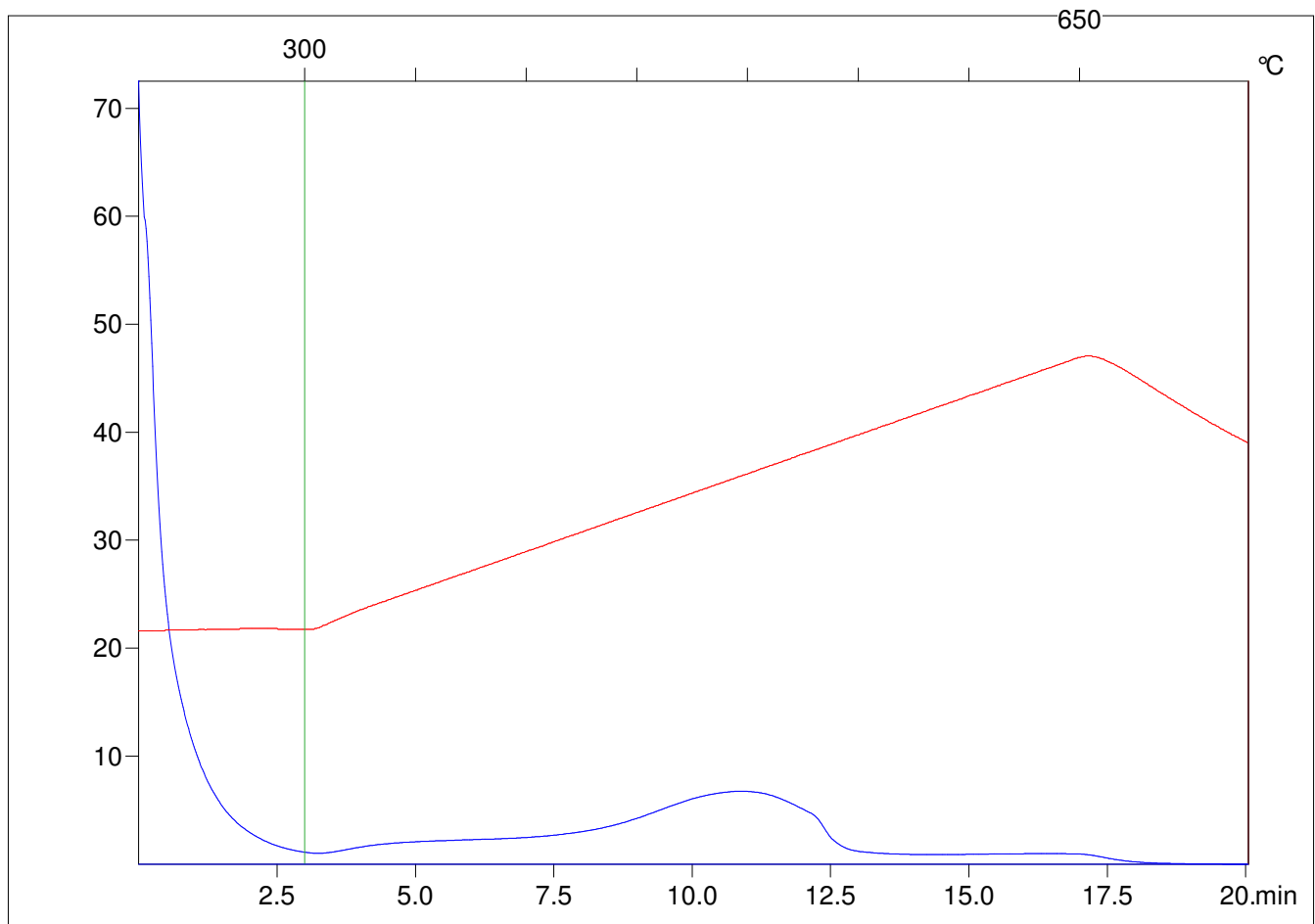
Method =Bulk Rock

Cycle=Basic

KFID(10*9)=1444

Qty =70.4

TOC=5.12



C:\VINC\PK2_1792\PK079.R00 : FID pyrolysis graphic

State

Pyro Status

Oxi Status